

Super Prime

A water based primer for non-porous surfaces

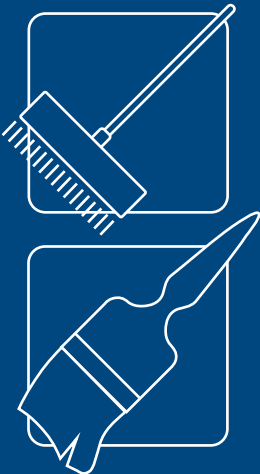
Packaging



Mixing



Application



Uses



Substrates

Concrete,
Compressed
cement sheet,
Renders,
Screeds

Description

A water based acrylic primer with solvent like penetration properties for use on smooth/helicoptered/steel trowelled concrete floors, compressed cement sheet, renders and screeds. Improves adhesion and reduces air bubbles rising through levelling compounds.

Uses

A primer for smooth/helicoptered/steel trowelled concrete floors, compressed cement sheet, renders and screeds, that improves the adhesion of subsequent toppings. Use internally on floor and walls, and externally on walls only.

Features

- Exceptional adhesion to smooth concrete
- Reduces air bubbles rising through levelling compounds
- Eliminates the need to etch or scabble concrete
- Has solvent like penetrating properties

Coverage (Approximate)

8-10m²/litre

Performance Data

Tensile adhesion pull-off strength in excess of 1.5 MPa.

Specification

The primer will be a water based acrylic with a minimum tensile adhesion strength exceeding 1.5 MPa such as **Super Prime** manufactured by **Construction Chemicals** and shall be applied in accordance with the manufacturer's instructions.

Surface Preparation

The substrate must be sound and clean, free from dust, dirt, waxes, paint, and curing compounds and release agents.

Application

Shake the container well before use. Apply the **Super Prime** to sound, clean substrates. It is advisable to do a test area to determine the suitability of the product. Apply with a stiff brush or broom, forcing the primer well into the surface. Apply the topping when the primer is dry or tack free, i.e. after 2-3 hours. Very absorbent concrete may require 2 coats.

Do not dilute, **do not** leave bare spots, **do not** use on continuously damp surfaces, i.e. swimming pools, shower bases.

Do not use on surfaces subject to negative hydrostatic pressure.

Shelf Life

2 years



Adelaide Phone (08) 8243 7888

Darwin Phone (08) 8947 1811

Perth Phone (08) 9356 9999

Auckland Phone (09) 273 5444

Brisbane Phone (07) 3271 2944

Melbourne Phone (03) 9761 4711

Sydney Phone (02) 9756 3533

Kuala Lumpur Phone (603) 5122 2522

www.constructionchemicals.com.au

The information contained in this technical publication is based on our current knowledge and experience and is provided as a guide only. In view of the many factors that may affect application it is the user's sole responsibility to ensure suitability for a specific purpose.

May 14